

## iSeeMammals

A citizen science project studying wildlife species by collecting data on their presence and absence.

---

Join our pilot project on black bears in New York.



## iSeeMammals



Collect and share data from your hikes and trail cameras.

Help researchers study wildlife populations over large regions!



## Bears in New York

Since the 1950s, the population of black bears in New York has been growing. Their range has also been expanding into new areas. As a result there has been an increase in the number and intensity of human-bear interactions. What landscape factors are influencing their growth and range expansion? How might bear populations change in the future?

### **Citizen Science**

To answer questions about bear ecology and to effectively manage bear populations, data must be collected throughout their distribution. But scientists and researchers alone cannot cover all 54,555 mi<sup>2</sup> of New York! Citizens can help in many ways, including collecting data in their local areas.



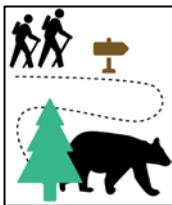
## 3 Ways to Collect Data

### Record Observations



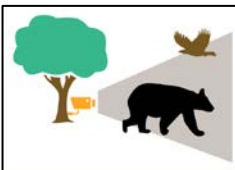
Bears and their signs (tracks, scat, hair, and markings) indicate presence of bears. Record where and when you observe them with the smartphone app.

### Go on a Hike



Hikes provide data about the absence of bears. This is important for understanding where bears occur and how they use the landscape. Use the app on a hike.

### Set up a Fixed Camera



A trail/fixed camera monitors a specific location for the presence of bears. Use the app to set up a camera and the website to submit data.

## **Become an iSeeMammals Citizen Scientist**

Join in local wildlife research. Your data will contribute to bear management in New York!

### **Stay Connected**

- Browse through photos submitted by other citizen scientists
- Access tips for recognizing signs and collecting high-quality data
- Learn about bear history and ecology
- Enter contests and win prizes!

## Contact Us

**Who:** Cat Sun, PhD student  
Dept. of Natural Resources  
Cornell University

**Website:** [iSeeMammals.org](http://iSeeMammals.org)

**Email:** [iseemammals@cornell.edu](mailto:iseemammals@cornell.edu)

**Social Media:** @iseemammals



